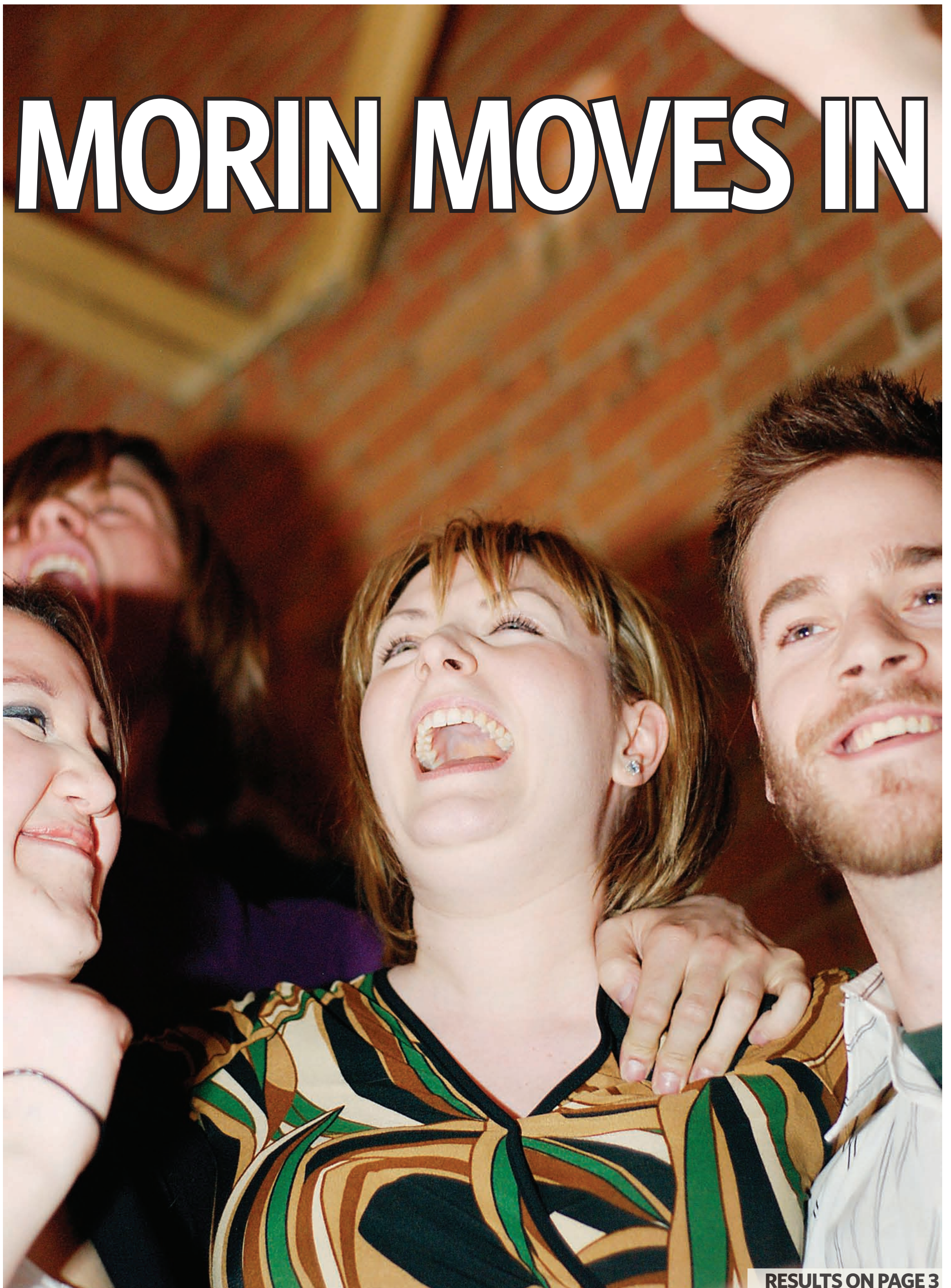


THE GATEWAY

volume XCVIII election special ♦ the official student newspaper at the university of alberta ♦ www.thegatewayonline.ca ♦ friday, 7 march, 2008

MORIN MOVES IN



RESULTS ON PAGE 3

THE GATEWAY

www.thegatewayonline.ca

friday, 7 march, 2008
volume XCVIII election special

Published since 21 november, 1910
Circulation 5000
ISSN 0845-356X

Suite 3-04
Students' Union Building
University of Alberta
Edmonton, Alberta
T6G 2J7

Telephone 780.492.5168
Fax 780.492.6665
Ad Inquiries 780.492.6700
Email gateway@gateway.ualberta.ca

editorialstaff

EDITOR-IN-CHIEF Adam Gaumont
eic@gateway.ualberta.ca | 492.5168

MANAGING EDITOR Paul Owen
managing@gateway.ualberta.ca | 492.6654

SENIOR NEWS EDITOR Natalie Climenhaga
news@gateway.ualberta.ca | 492.7308

DEPUTY NEWS EDITOR Ryan Heise
deputynews@gateway.ualberta.ca | 492.6664

OPINION EDITOR Conal Pierce
opinion@gateway.ualberta.ca | 492.6661

ARTS & ENTERTAINMENT EDITOR Paul Blinov
entertainment@gateway.ualberta.ca | 492.7052

SPORTS EDITOR Robin Collum
sports@gateway.ualberta.ca | 492.6652

PHOTO EDITOR Mike Otto
photo@gateway.ualberta.ca | 492.6648

DESIGN & PRODUCTION EDITOR Mike Kendrick
production@gateway.ualberta.ca | 492.6663

ONLINE COORDINATOR Victor Vargas
online@gateway.ualberta.ca

businessstaff

BUSINESS MANAGER Steve Smith
biz@gateway.ualberta.ca | 492.6669

AD SALES REPRESENTATIVE Patrick Cziolek
sales@gateway.ualberta.ca | 492.6700

AD/GRAPHIC DESIGNER Larissa Gilchrist
design@gateway.ualberta.ca | 492.6647

CIRCULATION PAL Megan Cleaveley
CIRCULATION PAL Kelsey Tanasiuk
circulation@gateway.ualberta.ca



THE GATEWAY is published by the Gateway Student Journalism Society (GSJS), a student-run, autonomous, apolitical not-for-profit organization, operated in accordance with the Societies Act of Alberta.

THE GATEWAY is proud to be a founding member of the Canadian University Press.

complaints

Comments, concerns, or complaints about the Gateway's content or operations should be first sent to the Editor-in-Chief at the address above. If the Editor-in-Chief is unable to resolve a complaint, it may be taken to the Gateway Student Journalism Society's Board of Directors; beyond that, appeal is to the non-partisan Society OmbudsBoard. The chairs of the Board of Directors and the OmbudsBoard can be reached at the address above.

copyright

All materials appearing in the Gateway bear copyright of their creator(s) and may not be used without written consent.

disclaimers

Opinions expressed in the pages of the Gateway are expressly those of the author and do not necessarily reflect those of the Gateway or the Gateway Student Journalism Society.

Additionally, the opinions expressed in advertisements appearing in the Gateway are those of the advertisers and not the Gateway nor the Gateway Student Journalism Society unless explicitly stated.

colophon

The Gateway is created using Macintosh computers, HP Scanjet flatbed scanners, and a Nikon Super Cool Scan optical film scanner. Adobe InDesign is used for layout. Adobe Illustrator is used for vector images, while Adobe Photoshop is used for raster images. Adobe Acrobat is used to create PDF files which are burned directly to plates to be mounted on the printing press. Text is set in a variety of sizes, styles, and weights of FENICE, Joanna, Kepler and Whitney. The Manitoban is the Gateway's sister paper, and we love her dearly, though "not in that way." The Gateway's games of choice are Apples to Apples and Mind Games.

contributors

Cover photo by Sam Brooks
Jennifer Huygen, Tom Wagner, Jonn Kmech, Kirsten Goruk, Sam Brooks, Lauren Stieglitz, Tara Stieglitz



TARA STIEGLITZ

"The only reason I ran this campaign, I guess, was redemption. To be honest, I tried as hard as I could to win, but I knew for a long time we wouldn't be coming out on top. This is purely just an effort to spark debate, new ideas, and get new discussion in there."

BOBBY SAMUEL



SAMBROOKS

"I feel great. A lot of Peter's ideas were extremely good, and we have to take all of them into account. He put up an excellent campaign, and I'm just happy it turned out the way it did."

STEVEN DOLLANSKY



LAUREN STIEGLITZ

"Kristen is amazing; she'll do a fantastic job, and I've gained so much respect for both of them. I couldn't have lost to two better people."

ALENA MANERA

STREETERS election night

As you may be aware, it's Students' Union election night, and a new president will be selected to replace Michael Janz. **Michael Janz: great president, or greatest president?**



Sangram Hansra
Science II



Dean King
Business IX



Zach Fugedi
Engineering III



Michael Janz
Conflict of Interest

"Janz is good; he's a good executive. I think everyone on campus loves the guy." [So I'll put you down for "greatest?"] "Definitely greatest."

"I deny the very premise of your question: he should be the *only* president." [So I'll put you down for "great?"] "Yeah, okay."

"Definitely the greatest president. [Any justification for that, or do you feel comfortable making that kind of sweeping statement without backing it up?] Well, he was Lister president before he was SU president, so he had the experience. [So was Jordan Blatz in 2004/05; what makes Janz greater than him?] Janz just has something about him. The twinkle in his eye. Something about him makes him special."

"Impeach!"



Morin elected president in historic first-round win

Despite a low voter turnout and little suspense, this year's Students' Union election was a night of firsts—and decisive victories

GATEWAY STAFF
Champions of Democracy

Janelle Morin was elected to office on Thursday night, along with Beverly Eastham, Kristen Flath, Stephen Dollansky, and John Braga—meaning for the first time since 2000/01, the Students' Union Executive will be predominantly female.

Morin, who worked as director of Student Group Services (SGS) this year, won the presidential race in a landslide, collecting 52 per cent of the vote on the first ballot, marking the first time that the presidency was decided on the first ballot since the preferential system was put in place in 2004.

"It's pretty surreal," Morin said after the results were announced. "I think I had the best possible volunteers that I ever could have imagined."

"I'm going to work really hard, and I'm going to try to fulfill all of the promises I gave in this race, and I thank [the voters] very much for placing their trust in me."

Morin finished with 2082 votes, 1395 more than second-place Dustin Miller. Bobby Samuel, mired in controversy throughout his campaign, fell to third, eight votes behind Miller. Joke candidate "the/future" came in fourth with 207 votes, edging out Sheldon Tibbo, who received 205.

In another wide margin, Eastham garnered 2360 of the 3768 votes for vice-president (External), accounting for 63 per cent of the vote compared to opponent Matt Trodden's 27 per cent.

"It was an awesome experience," Eastham said. "Everything about running has just been so great. [It's been] a really great experience to be involved in an election and things like this."

"It certainly wouldn't have been the same without having some sort of opposition, for sure."

In what was by far the tightest race in the election, the Student Life contest saw Flath carry a substantial lead throughout the first two rounds of balloting before beating Sean McQuillan in the

strength of a single-vote lead in the first round. This was the first time that a tie had occurred since the SU adopted preferential balloting.

Joining the three women in the winners' circle Thursday night were a couple of familiar faces, as current SU President Micahel Janz and Dollansky, sitting Vice-President (External), were both successful in their campaigns as well.

In keeping with the pattern of firsts, Dollansky became the first SU vice-president to make a lat-

on his way to becoming the Board of Governors representative, easily edging out "none of the above."

"I'm back—you can't get rid of me!" Janz shouted from the balcony in the normally shuttered Powerplant after his victory was announced.

Rounding out a night of lopsided results Thursday, Braga won the vice-president (Academic) race with 59 per cent of the vote over Bryant Lukes, who wasn't in attendance. Lukes took 26 per cent of the vote in his second consecutive run for the VPA portfolio.

"Bryant Lukes is very passionate. The environment is a planet-wide concern and something that needs to be addressed, and I absolutely applaud him for the way in which he has ran for two years and has shown dedication to both the Students' Union and to humanity as a greater whole," Braga said of his opponent.

With no hot-button issues like the U-Pass and Coke referenda of last year—which saw 7355 votes cast—turnout was particularly low, coming in unofficially at 4075.

"Obviously it's disappointing whenever you see a low voter turnout, but the voters that did come out were informed and voted in their best interest," SU chief returning officer Craig Turner said.

"The key factors were there were no plebiscites or referendum questions. I can't even remember the last time that happened. I think we need to get the word out earlier next year."

"It's pretty surreal. I think I had the best possible volunteers that I ever could have imagined."

JANELLE MORIN
SU PRESIDENT-ELECT

third round with 64 per cent of the vote.

"I'm pretty excited," said Flath, who served as associate director of SGS alongside Morin. "I'm really looking forward to being able to implement what I wanted to do."

"It was a tough campaign, and everyone did a really good job, [and] I think the results showed that."

While Manera was considered to be in a dead heat with Flath, she bowed out after the second round of balloting in one of the closest margins in SU election history. McQuillan and Manera tied in the second round, but McQuillan advanced on

eral move in office by defeating Peter Rychlik for vice-president (Operations & Finance) with 66 per cent of the vote, compared to Rychlik's 22 per cent.

"I think that it'll be exciting for us, and me especially, to move my focus from outside to inside the organization," Dollansky said of next year's Executive. "There are a lot of things that I'm looking forward to doing, especially with our building—the lower level. I think that those renovations are going to mean great things for the SU. It'll be exciting."

Janz, meanwhile, took 84 per cent of the vote

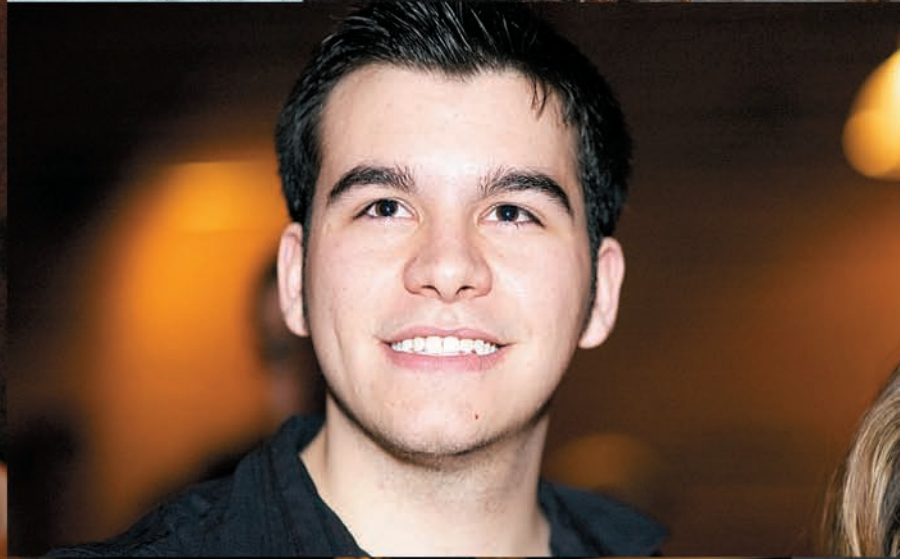
2008 SU ELECTION RESULTS					
					
Janelle Morin PRESIDENT	John Braga VP (ACADEMIC)	Steven Dollansky VP (OPFSI)	Beverly Eastham VP (EXTERNAL)	Kristen Flath VP (STUDENT LIFE)	Michael Janz BOG REPRESENTATIVE
VICTORY IN ONE ROUND 2082 votes received out of 3989 votes cast (52%)	VICTORY IN ONE ROUND 2177 votes received out of 3694 votes cast (59%)	VICTORY IN ONE ROUND 2452 votes received out of 3707 votes cast (66%)	VICTORY IN ONE ROUND 2360 votes received out of 3738 votes cast (63%)	VICTORY IN THREE ROUNDS 2249 votes received out of 3507 votes cast (64%)	VICTORY IN ONE ROUND 3221 votes received out of 3838 votes cast (84%)



su elections 2008

a night in photos

photos by Mike Otto, Tara Stieglitz, Lauren Stieglitz, and Sam Brooks



We'll be back on Tuesday to wrap things up with a special by-the-numbers breakdown of the election. For more photos and coverage, please visit our website.

www.thegatewayonline.ca

PUBLIC INTEREST

The Alberta Public Interest Research Group held its annual board elections concurrently with the Students' Union this year. APIRG operates as a dedicated fee unit, which students pay \$2.94 per term to, and is committed research, education, advocacy, and action in the public interest.

While there were fears that not enough individuals would run for the nine available seats, a total of ten candidates ultimately vied for spots.

2008 APIRG BOARD OF DIRECTORS

- Ela Przybylo
- Virginia Dowdell
- Patrick Law
- Jeff Williams
- Derek Warwick
- Jackie Ferner
- Ian Wright
- Debrah Bergin
- Brooke Leifso